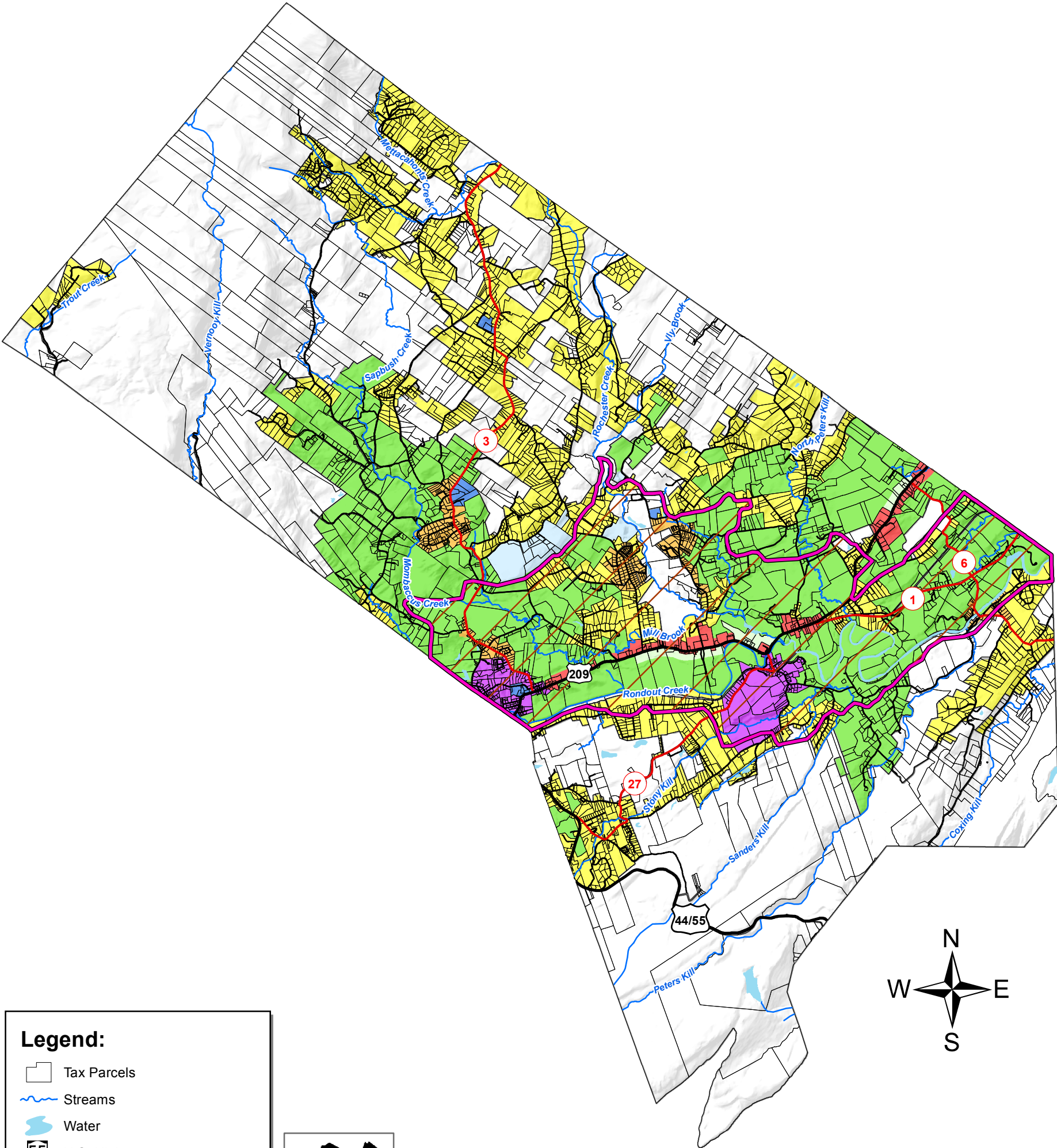


Town of Rochester Zoning 2015



Legend:

- Tax Parcels
- Streams
- Water
- U.S. Highway
- County Route
- Local Road

- AR-3, Residential Agricultural
- AB-3, Agricultural Business
- R-1, Neighborhood Residential
- R-2, Low Density Residential
- R-5, Rural Conservation
- H, Hamlet
- I, Industrial
- NR, Natural Resources
- B, Business
- AP, Aquifer Protection Overlay



Created by:
Thomas Hynes
Ulster County
Information Services
May 2015

Data Sources:

Roads - NYS Streets (Current to 05/2015). Maintained by Ulster County Information Services.

Parcels - Ulster County Real Property Tax Service (Current to 05/2015)

Water Bodies and Streams - Area and Linear Hydrography as part of the Accident Location Information System (ALIS) project dataset (01/2008). Obtained from the New York State Office of Cyber Security & Critical Infrastructure Coordination (CSCIC).

The Aquifer Protection Overlay District are based upon the Aquifer Protection Overlay District map produced by Steven Winkley of the NY Rural Water Association (08/2006).

Zoning Districts are based upon the zoning map (.tif image) produced by Shepstone Management Company Planning and Research Consultants (02/12/2009). Updates Confirmed by Mike Baden May 11, 2015.

Zoning District boundaries were adopted in September 24, 2009 by local law #4 of 2009 in Chapter 140 Zoning. Amended May 7, 2015 by local law #2 of 2015