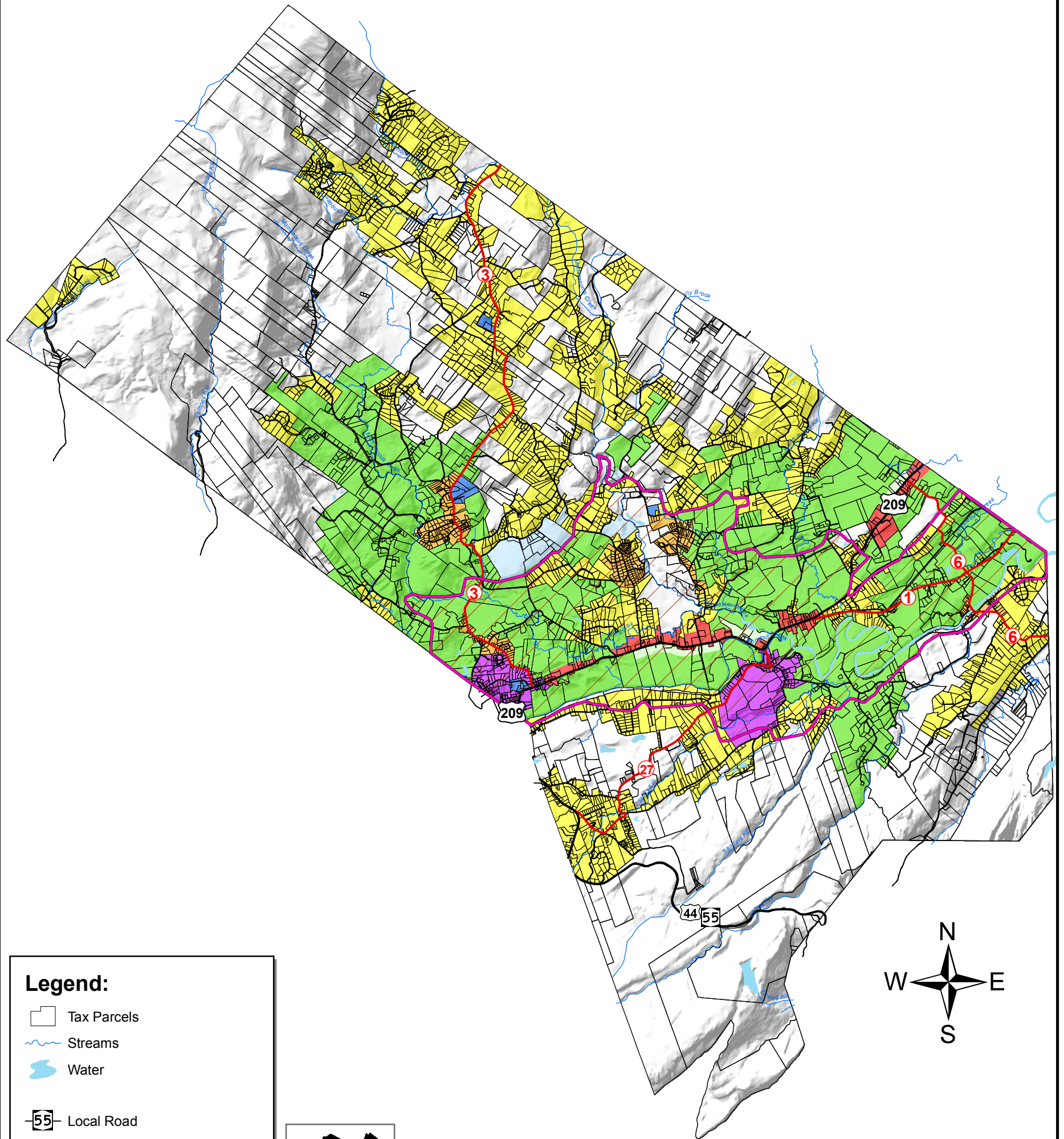


# Town of Rochester Zoning



## Legend:

- Tax Parcels
- Streams
- Water
- Local Road
- County Route
- U.S. Highway

## Zoning Districts

- AR-3, Residential Agricultural
- AB-3, Agricultural Business
- R-1, Neighborhood Residential
- R-2, Low Density Residential
- R-5, Rural Conservation
- H, Hamlet
- I, Industrial
- NR, Natural Resource
- B, Business
- AP, Aquifer Protection Overlay



Created by:  
Thomas Hynes  
Ulster County  
Information Services  
September 28, 2009

## Data Sources:

Roads - Ulster County Emergency 911 (Current to 01/2009). Maintained by Ulster County Information Services.

Parcels - Ulster County Real Property Tax Service (Current to 04/2009)

Water Bodies and Streams - Area and Linear Hydrography as part of the Accident Location Information System (ALIS) project dataset (01/2008). Obtained from the New York State Office of Cyber Security & Critical Infrastructure Coordination (CSCIC).

The Aquifer Protection Overlay District are based upon the Aquifer Protection Overlay District map produced by Steven Winkley of the NY Rural Water Association (08/2006).

Zoning Districts are based upon the zoning map (.tif image) produced by Shepstone Management Company Planning and Research Consultants (02/12/2009). Data Confirmed by Mike Baden of the Town of Rochester on September 28, 2009.

Zoning District boundaries were adopted on September 24, 2009 by local law #4 of 2009 in Chapter 140 Zoning.